



PocOverIP Gateway has been specially designed for reliable and effective solutions for indoor Industrial and Campus applications.

PocOverIP is an RF GATEWAY allowing POCsAG messages to be received and/or transmitted. Through either an RS 232 or RS485 it connects to a Central Server using the IP Network.

It is designed to work with a **Birdy SLIM IoT** for 2-way applications allowing for Message Acknowledgement and User Initiated messaging

PocOverIP can be powered by a +12V/500mA adapter through its jack connector or through its RJ45 Ethernet connector, using a POE (Power Over Ethernet) on IP network.

It includes natively 3 outputs open collector type and an analogue input

(0..10V, 4-20mA) or digital **PocOverIP** allowing activation of one of those 3 outputs upon specific message reception. , all integrated in a small size housing,

PocOverIP receiver programming can be done locally through its RS232 or remotely due to its integrated web server.

Several modes of use are configurable. It can decode all POCsAG transmissions or use filters on particular addresses and messages.

The PocOverIP transmits POCsAG messages at 25mW.



FEATURES

Message Service Features

- Mode SPY : decode all POCSAG messages on the programmed frequency
- Mode Addresses: decode all POCSAG messages on the RIC programmed (128 max)
- Mode Message: decode only the message or text programmed
- Mode Output: active the output on the message or addresses programmed

General Features

- Aluminium case
- Weight: 300 grs
- Size: 100 x 100 x 30 mm
- Two lateral fixation integrated

POCSAG Features - Receiver

- Frequency: 438~470MHz- 863~870MHz
- Others upon request
- Channel spacing: 12.5/20/25 KHz
- Transmission speed: 512bps or 1200bps or 2400bps
- Modulation: POCSAG NRZ
- Frequency deviation: $\pm 2,25\text{KHz}$ (12.5KHz); $\pm 3.6\text{KHz}$ (20KHz); $\pm 4.5\text{KHz}$ (25KHz)
- Sensitivity: -122dBm typ
- Selectivity: 60dB +/-25KHz
- Intermodulation protection: > 60 dB
- Frequency stability: $\pm 2\text{ppm}$

POCSAG Features - Transmitter

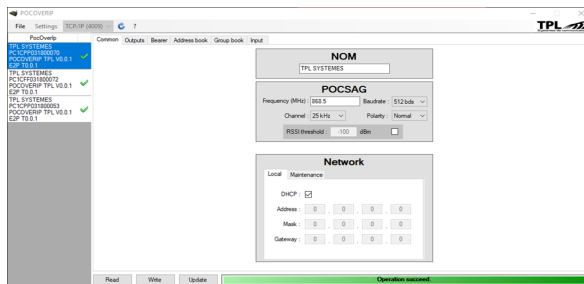
- Output power : up to +14dBm (25mW)
- Frequency : UHF 426-474MHz/ 867-870MHz/900MHz ...
- Channel spacing : 12.5/20/25 KHz
- Transmission speed : 512bps or 1200bps or 2400bps
- Modulation : NRZ / FSK
- Frequency deviation : $\pm 2.25\text{KHz}$ (12.5KHz) / $\pm 3.6\text{KHz}$ (20KHz) / $\pm 4.5\text{KHz}$ (25KHz)
- Modulation rise time : $250\mu\text{s} \pm 25\mu\text{s}$
- Frequency stability: $\pm 2.25\text{KHz}$ (12.5KHz); $\pm 3.6\text{KHz}$ (20KHz); $\pm 4.5\text{KHz}$ (25KHz)

Operating

- Operating humidity and temperature from -10°C to +60°C, 95% at +40°C
- Storage humidity and temperature from -20°C to +85°C, 95% at +40°C

Specifications are subject to changes without notice to improve performances, functions or design.

ACCESSORIES



Programming Software